

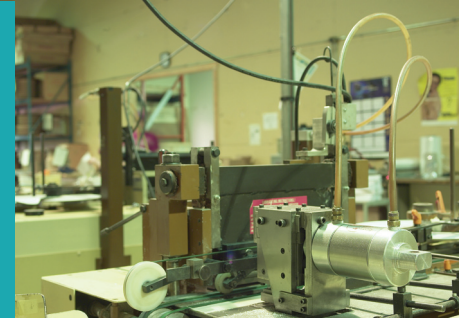
SybizVision

Bill of Materials

STREAMLINE YOUR MANUFACTURING

Ideal for the small to medium-sized manufacturer, the Sybiz Vision Bill of Materials (BOM) module integrates with the Sybiz Vision accounting system to streamline the manufacturing process.

The module follows production principles familiar to all manufacturers by taking raw materials, components, labour and overheads through to the finished product.



BILL OF MATERIALS BENEFITS INCLUDE:

Accurate Costing with Up to Date Prices

Sybiz Vision Bill of Materials integrates with the Inventory module of the Sybiz Vision accounting system, so much of the information you need for costing and production is already available on your system.

Save Time

As the Sybiz Vision Bill of Materials module integrates with the Sybiz Vision Inventory module, the required components for a manufacturing run may be automatically transferred to that run without re-keying.

Conversely, the finished goods can be automatically transferred back to stock when the production run is completed. Unused components can also be transferred back into stock.

Product Number	Product Name	Sold in	On Hand	Cust. Orders	Supp. Orders	Wholesale	Trade	Retail	Go
1103	Ryobi Pedestal Drilling Machine 6"	EACH	17	5	20	9,000.00	10,000.00	15,000.00	
1104	Ryobi Lathe Table 12 Foot	EACH	9	3	10	10,000.00	11,000.00	12,000.00	1
1105	Ryobi Hand Drills - Impact 4.5"	EACH	8	3	10	5,000.00	6,000.00	7,000.00	
1111	Mercedes Benz SE 123	Each	0	0	0	233,000.00	250,000.00	270,000.00	28
1110	Widgets - Blue - Left Handed	EACH	961	50	400	3.00	4.00	5.00	
1111	Widgets - Pink - Left Handed	EACH	0	0	0	2.00	3.00	4.00	
1122	Steel Tubing	EACH	0	0	0	10.00	12.00	14.00	
1234	Sybiz Superbike (mens)	EACH	53	1	0	600.00	600.00	600.00	
1235	Sybiz Superbike (ladies)	EACH	9	1	0	500.00	615.00	590.00	
1280	Lot Tracked Item	Each	5	0	0	10.00	20.00	30.00	
1282	Pencils HB	Each	1020	0	1000	2.22	3.33	4.44	
2	Paperclips - Purchase Ratio	Box	1088	0	636	74.62	76.42	88.54	
2000	Krupps - Angle Grinder 6"	EACH	7	3	10	5,000.00	6,000.00	7,000.00	
2001	Krupps - Torque Wrenches Adjustable	EACH	10	3	10	6,000.00	7,000.00	8,000.00	
2002	Drill & Bit Sets - Diamond Head	EACH	10	3	10	2,000.00	3,000.00	4,000.00	
2003	Hand Held Calculator	Each	150	0	100	10.00	10.00	11.00	
2028	2028 Drum	Each	3	0	0	500.00	590.00	600.00	
2028MC	2028 Analogue Copier	Each	4	0	0	3,000.00	3,200.00	3,500.00	
2106	Small Wheelbarrow	EACH	28	10	31	29.59	35.51	42.51	
2109	SuperGrunch Mixer (Serial Numbered)	Each	6	0	0	77.00	92.00	95.00	
2222	Dictation Machine	EACH	21	0	30	206.41	247.69	297.23	
2245A	HPL Cartridge	Each	12	0	0	100.00	120.00	140.00	
2262	1015 Toner	Each	12	0	0	300.00	350.00	400.00	
2341	LSS120MS Drive	Each	13	0	10	150.00	170.00	190.00	
2343	Filter	Each	12	0	0	200.00	250.00	270.00	
2667	1015 Developer	Each	12	0	0	100.00	140.00	160.00	
2694	7033 Toner	Each	12	0	0	130.00	150.00	170.00	
2786	Condenser	Each	12	0	0	500.00	650.00	700.00	
2879	7040 Toner	Each	23	0	0	160.00	170.00	180.00	

The latest prices are entered through your Sybiz Vision purchasing system directly from supplier invoices, and stock levels are automatically updated from supplier deliveries. Once the bill for a product has been entered the Parts Costing report will always give an accurate picture.

Mass Replace Wizard

The Mass Replace Wizard enables you to replace any component used in a bill with another component. The wizard guides you through the steps. Quantities may also be adjusted.

Bill of Materials Transactions

Sort order: Product number

Product number: 1234 | Product title: Sybiz Superbike (mens)

Quantity: 10.0000 | Production Id: BOM 004

Location: SA - Main | Transaction date: 27/06/2006

Production Method:

- Explode assemblies only where not enough stock
- Explode down one level only
- Explode down all levels to components

Processing Options:

- Wastage based on: Components Finished product
- Round down fractional wastage if under 0.50
- Include labour and overheads
- Update statistics
- Printed report
- Use 'Returnable' flag
- Use wastage

Buttons: Finished, Process, Viewer, Exit

If the goods have been manufactured to a customer order the customer can be invoiced through the Sybiz Vision Debtors module.

SybizVision

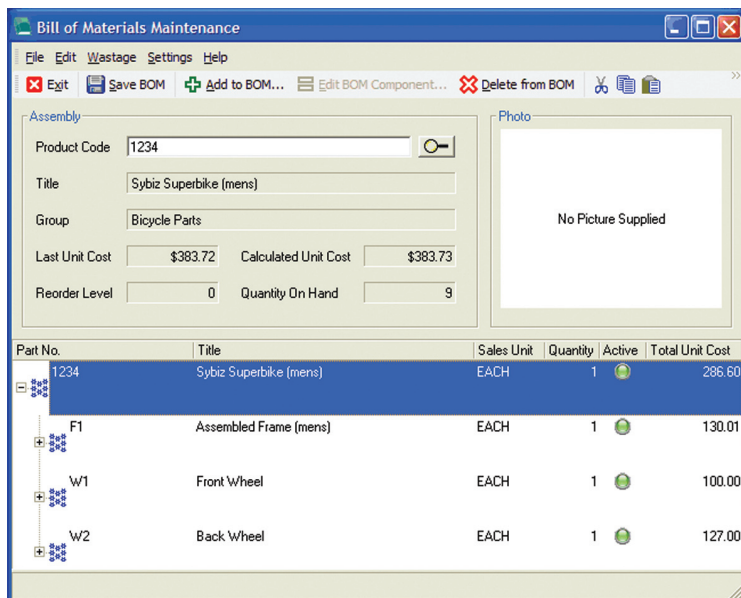
Bill of Materials

STREAMLINE YOUR MANUFACTURING

Easy to Learn and Use

Most businesses already use Microsoft® spreadsheets, word processors and accounting software. Now manufacturers can enjoy the benefits of working with the easy to use, Microsoft Windows®-based, Sybiz Vision Bill of Materials.

The system enables you to set up 'family trees' for each product to link together all the raw materials, components, assemblies and labour used in the manufacturing of a product. The straightforward concept and design makes the system easy to learn and use.



Each bill may include stock items, labour and overheads. All bills are kept together in the same database, making it easy to link a common bill (say, a subassembly) to more than one product.

Reduce Data Capturing

If your business produces products with common components it may not be necessary to set up new bills for each. The Copy Bill function duplicates an existing bill so you may only have to change one or two components. The database is also designed so that the same subassemblies may be used in a variety of products.

Useful Reports

The reports available in Sybiz Vision Bill of Materials provide detailed information relating to your bills such as the location in which a particular component is being used and the components required to complete a customer order. These reports are:

- Parts Listing
- Parts Costing
- Where Used
- Shortage Summary
- Pick List

Other Benefits

Other benefits of Sybiz Vision Bill of Materials include:

- additional note fields
- fractional quantities for partial quantities
- the ability to handle stock, labour and overhead items, for example, machine time or electricity
- the ability to search by code or description
- standard, FIFO and average costing

Contact Details

Sybiz is a developer and supplier of business software for medium-sized businesses in Australia and internationally. With more than 30 years of industry expertise and continual innovation, Sybiz creates and designs software for globally orientated businesses.

For more information contact a Sybiz Authorised Business Partner or Sybiz:

Tel: 1300 1 SYBIZ (1300 179 249)

Email: sybiz@sybiz.com

Website: www.sybiz.com

